

# Hamilton Island Three Nights Package with Coral View Room + Half day Whitehaven Beach Cruise + Full day Great Barrier Reef Cruise

• 4 days 3 nights •

## • KEY FACTS •



1. Return Hamilton Island Airport/Marina shuttle bus transfers
2. Use of catamarans, windsurfers, kayaks, stand up paddleboards and snorkelling equipment
3. Use of gym, spa, sauna, tennis court hire
4. Use of the complimentary Island Shuttle service (operates each day from 06:50 to 23:00)
5. Kids Stay and Eat Free program (conditions apply - please see Other Info)
6. Complimentary WiFi (download limits apply)
7. Three (3) Nights Accommodation in Coral Sea View Room at Reef View Hotel
8. Daily Full buffet breakfast for each person
9. Full day cruise with Cruise Whitsundays to the Great Barrier Reef for each person
10. Half day trip with Cruise Whitsundays to Whitehaven Beach for each person
11. Unlimited entry pass to Wild Life Hamilton Island for each person



1. Return flights to/from Hamilton Island
2. Food & beverages not listed as Inclusions
3. Souvenirs
4. Travel Insurance
5. Any optional extra items (including but not limited to rides / shows / encounters / experiences / photo packages) that are not included in the standard admission. All optional extra items are at own expense.

## Departure point

- Departs: daily, all year round

Tour does not run on Chinese National Day Holiday Period (28 September to 07 October), Festive Season (22 December to 9th January), Chinese New Year period (06 February to 21 February 2021)

## How to get there

- By Air

Hamilton Island Airport services direct flights from Sydney, Melbourne, Brisbane and Cairns, with Jetstar, Virgin Australia and Qantas.

- By Ferry

Ferries cruise to Hamilton Island throughout the day from Port of Airlie and Shute Harbour on the mainland. Long term parking is available at the Port of Airlie terminals, as well as other parking within the precinct.

If you're travelling to Hamilton Island from Brisbane, Townsville or Cairns, coaches run to Airlie Beach, and arrive at the Port of Airlie transport terminal, right at the Port of Airlie ferry departure point.

## Reconfirmation requirements

Please be advised you are required to reconfirm with Front Desk at check in to reconfirm your booking, departure location and time, and boarding time with your confirmation number. Please adjust your travel plan according to the details given by Front Desk at time of reconfirming.

## What to bring/wear

- Overnight bag with personal towel & toiletries. No toothbrush, toothpaste, or slippers provided
- Appropriate clothing for all weather conditions, eg. jacket for cooler months.
- Comfortable walking shoes
- Protective clothing, hat, sunscreen lotion, and sunglasses
- Water bottle, Snacks
- Swimmers and towels

## Other info

- Umbrella / raincoat if rains
- Insect repellent
- Camera (waterproof if swimming)
- Money / credit card for optional purchases

### 【Important Post-Covid Service Information】

Please refer to <https://www.hamiltonisland.com.au/reopening-faqs> for the latest updates during the post-Covid period.

\*\*\*\*\*

- Check-in time is 14:00; Check-out time is 10:00.

- Airport and marina transfers are included in this package. Be sure to let us know your travel details, Hamilton Island's transfer staff will be waiting for you outside the airport's baggage collection area.

- Package inclusions are pre-booked Great Barrier Reef Cruise on Second day of stay, Whitehaven Cruise on Third day of stay, with the First day being the day of arrival.

- Download the Hamilton Island app

This handy app includes everything you need to know about Hamilton Island's guest services, facilities, activities, opening times and what's on. It's your personal concierge to everything there is to see and do during your Island holiday, and highly recommend downloading it before your visit.

### 【Kids stay and eat free on Hamilton Island】

- Eating

As part of this great offer, any children up to 12 years can eat free in Selected restaurants include coca chu, Manta Ray, Pool Terrace, Sails Steak and Seafood Grill and WILD LIFE Hamilton Island Café, when dining with their parents and choosing from the kids' menu.

Please note Kids Eat Free is for dine in only and only available when a minimum of one main adults meal is ordered. KEF does not apply to takeaway, delivery or room service meals.

- Sleeping

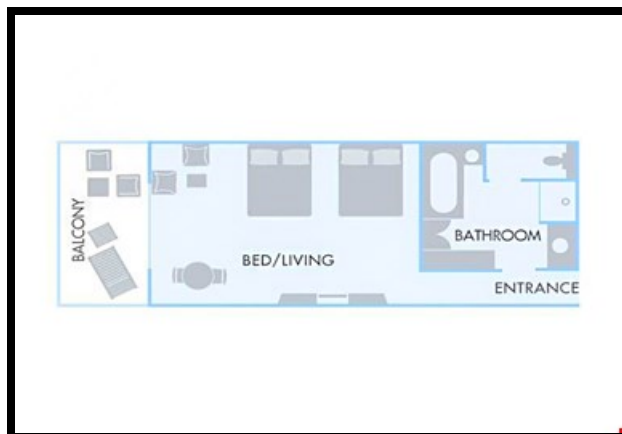
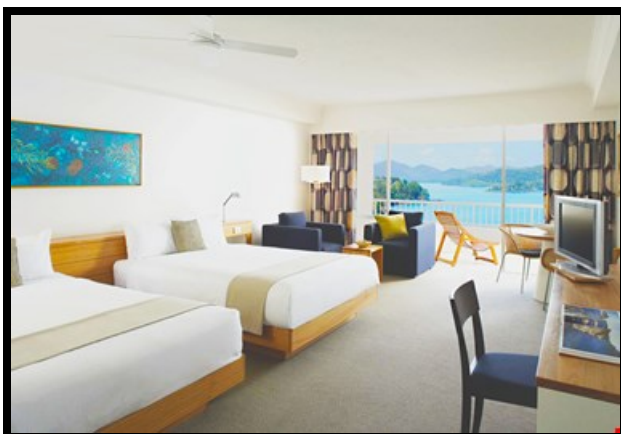
At participating accommodation there's no charge for children aged up to 12 years when sharing a room with their parents and using existing bedding.

To verify the eligibility for these kids' travel deals, you will be asked to display your room-key/lanyard that will be issued upon check-in.

## • OVERVIEW •

### Hamilton Island Three Nights Package with Coral View Room + Half day Whitehaven Beach Cruise + Full day Great Barrier Reef Cruise

A great way for you to experience everything the Whitsundays and the Great Barrier Reef has to offer. Witness the whitest sand in the world on Whitehaven Beach, feast your eyes on the most exotic marine life in the beautiful waters of the Great Barrier Reef and get up close and personal with a collection of native animals including koalas, kangaroos, crocodiles, wombats and various reptiles at Wild Life Hamilton Island.



---

# Hamilton Island Three Nights Package with Coral View Room + Half day Whitehaven Beach Cruise + Full day Great Barrier Reef Cruise

---

## Day 1 - Arrival and check-in

Upon arrival on Hamilton Island, simply make your way towards the baggage collection area where Hamilton Island's staff will be waiting to take you to your accommodation. Airport transfers for hotel guests are complimentary.

Hamilton Island offers a range of facilities and services to ensure a relaxing, stress-free holiday. For your convenience, you'll find a medical centre, post office, general store, bottle shop, and a several boutiques and gift stores. You're also spoilt for choice when it comes to eating and drinking, with options ranging from renowned fine dining restaurants and bars, to relaxed cafes and family-friendly takeaway. At the Beach Sports hut on Catseye Beach you'll find a range of watersports equipment for hire, and there are also several beautiful pools dotted across the island.

## REEF VIEW HOTEL

Standard Check in time from 14:00

Location: 50m to Catseye Beach; 100m to Resort Centre; 2km to airport

The Reef View Hotel features extremely spacious, well-appointed rooms all with private balconies overlooking either tropical gardens or the breathtaking vista of the Coral Sea. The upper floors boast a range of luxuriously appointed suites. All rooms face the sea & are complete with outdoor furniture to experience the spectacular sunrises & sunsets.

**Property features:** Restaurant, bar and lounge, 35m pool, business centre, tour desk, porters desk, room service, disabled facilities, 24 hour reception, beach towels provided, access to Internet, air-conditioning and ceiling fan, private balcony, television, bar fridge and mini bar, tea and coffee making facilities and rooms serviced daily

## Coral Sea View Room

Occupying floors five to eighteen, the Coral Sea View Rooms offer spectacular sea views, along with all the features and facilities you'd expect from a four-star hotel.

- The breathtaking views over the tropical Whitsunday Islands.
- The bright, open feel and the lovely ocean breeze.
- The wide, spacious room with your own private balcony - perfect for enjoying sunset/sunrise.
- Room service, in-house movies, and iPod connectivity - so you can relax in the comfort of your own room.

## HAMILTON ISLAND WILDLIFE

A great activity the whole family will love, Hamilton Island Wildlife gives you the opportunity to get up close to some iconic Australian wildlife.

- Central location  
Hamilton Island Wildlife is conveniently located on the resort side of the island.
- Unique experiences  
Get up close to all kinds of Australian marsupials, snakes, lizards, koalas and kangaroos. You can even meet the park's very own giant crocodile and have breakfast with koalas!
- Guided tour  
Take a fun, guided tour with one of the expert keepers, who will help you feed, talk to, and touch some of the Aussie animals. Guided tours are run daily at 10:00 and 16:00.
- Fun day out  
When you're finished exploring the park, you can enjoy a delicious breakfast or lunch at the Wildlife Park café.
- Aussie Animal Encounters  
Get up close and have your photograph taken with some of Australia's most popular wildlife! Koalas, dingoes, pythons, lizards and our all-time favourite Freddie the talking Cockatoo!

Opening hours: daily from 08:00 to 17:00

## Timetable

Reference only, subject to change without notice.

07:00 - 10:00 Breakfast with the Koalas

09:30 - 10:00 Koala Encounter and Photo

10:00 - 10:45 Park Tour

11:00 - 11:30 Snake/Reptile/Bird Encounter and photo

11:30 - 12:00 Dingo Encounter and photo

15:15 - 15:45 Koala Encounter and photo

16:00 - 16:45 Park Tour

Please enquire at Hamilton Island Wildlife's front desk to secure your spot in one or all of these amazing animal encounters and photos (at own costs).

How to get there: Hamilton Island Wildlife is located on the resort side of the island.

## Day 2 - Great Barrier Reef Full Day Cruise

**Breakfast** choose from the following restaurants:

- Pool Terrace: 06:00 - 10:30
- Sails: 07:00 - 10:30
- Wildlife Hamilton Island: 07:00 - 10:00

Cruise two hours each way via a motorised catamaran to spend a full day at a pontoon, located on the outer Great Barrier Reef, specifically known as Hardy Reef.

### Tour Details:

Approximately 3.5 hours spent at a pontoon including morning and afternoon tea, a buffet lunch, all snorkelling equipment, semi submersible glass bottom boat and underwater viewing chamber. There is a licensed bar on board, as well as change rooms and toilet facilities

Sample itinerary

Reference only, please note times are subject to change. ***Please reconfirm your cruise departure time with Front Desk upon check in.***

07:30 - Breakfast

08:30 - Check in at the Cruise Whitsundays office at the Marina Village

09:00 - Depart Hamilton Island Marina

11:00 - Arrive at Reefworld

12:00 - 14:00 - Lunch served

14:30 - Depart Reefworld

17:00 - Arrive back at Hamilton Island Marina

Enjoy free time after arrival back to Hamilton Island and dinner at own arrangement.

### WHAT TO BRING

- Swimwear and towel
- Protective clothing, hat and sunscreen
- Camera
- Light jacket or sweater for a cool or windy day
- Cash/credit card for optional activities (guided snorkelling safaris, scuba diving, heli-scenic flights)

## Day 3 - Whitehaven Beach Half Day Cruise

No visit to the Whitsundays would be complete without a visit to the pristine and world-famous Whitehaven Beach.

### Tour Details:

Spend 1.5 - 2 hours on Whitehaven Beach to swim in the crystal clear waters, take a leisurely walk along the pristine beach, join in the beach games or just relax and soak up the sunshine – the choice is yours! Morning or afternoon tea is included.

### Cruise Sights and Highlights

- Cruise to the magnificent Whitehaven Beach on board an air-conditioned catamaran , and spend up to two hours swimming or exploring the surrounds.
- Stinger suit included.
- Complimentary morning or afternoon tea and coffee is also provided.

Sample itinerary

Reference only, please note the times are subject to change without notice. ***Please reconfirm your cruise departure time with Front Desk upon check in.***

Afternoon Cruise

12:25 - Check in at Hamilton Island Marina

12:45 - Board vessel

12:55 - Depart for Whitehaven Beach

13:35 - Arrive Whitehaven Beach

16:15 - Depart Whitehaven Beach

17:00 - Arrive Hamilton Island Marina

Enjoy free time after arrival back to Hamilton Island and dinner at own arrangement.

Please be aware that occasionally, due to weather conditions, arrival back at the island may be later than specified.

#### What to bring

- Hat
- Towel
- Sunscreen
- Camera
- Swimmers
- Cash or credit card for extra snacks, drinks or souvenirs.
- Flat-soled shoes or thongs (no high-heels)
- A light jacket or warm clothes for after swimming or if the weather becomes cool.

How to get there: Cruise Whitsundays are located in the Marina Village at A Arm, opposite the Ice Cream Parlour.

#### Day 4 – Check out before 10:00

Standard Check out time: 10:00

**Breakfast** choose from the following restaurants:

- Pool Terrace: 06:00 - 10:30
- Sails: 07:00 - 10:30
- Wildlife Hamilton Island: 07:00 - 10:00

Please check out before 10:00, you may store your luggage at the reception and explore Hamilton Island before your departure flight, please check with front desk for the free shuttle bus timetable of the relevant flight.

Please follow the departure information found in your welcome letter before boarding your complimentary shuttle bus to the airport.

### • POLICY •

#### Cancellation Policy

- If you cancel at least 30 day(s) in advance of the scheduled departure, there is no cancellation fee.
- If you cancel between 0 and 29 day(s) in advance of the scheduled departure, there is a 100 percent cancellation fee.
- If no show, no refund.



Follow us

Australia +61(0)2 9660 8881

**Enjoyaus**

enjoyauscn f Enjoyaus 享樂澳洲遊

E web@enjoyaus.com