

Croc Express to Australia Zoo Full Day Tour with Koala Pack Departs from Brisbane

• 10 hours (approx.) •

• KEY FACTS •



1. Transfer from/to selected Brisbane hotels included before departure time. Must be pre-booked.
2. Glasshouse Mountains scenic drive
3. Entry to Australia Zoo
4. Approximately six hours to explore Australia Zoo
5. Koala Cuddle, Souvenir Photo and Wildlife Hospital Sneak Peek
6. Comfortable air conditioned coach and informative commentary



1. Food & beverages not listed as Inclusions
2. Souvenirs
3. Travel Insurance

Departure point

- Departs: daily, all year round
Tour does not run on Christmas Day (25 December), Boxing Day (26 December), New Year's Day (01 January)
- Departure Point: The Sebel Brisbane (Address: Corner of Albert and Charlotte St, Brisbane City QLD 4000)
- Departure Time: 08:00
Complementary transfer from/to selected hotels included before departure time. Must be pre-booked.
- Arrives back at approximately 18:00

How to get there

Complimentary transfer from/to selected Brisbane hotels included. Please indicate the name of your hotel at the point of booking - the most convenient pick-up location and time will be advised in your booking confirmation.

Reconfirmation requirements

Please be advised you are required to contact The Service Provider 24 hours prior to the travel date during business hours to reconfirm your booking, pick up location and time, and departure time with your confirmation number. Please adjust your travel plan according to the details given by The Service Provider at time of reconfirming.

Check-in requirements

Please arrive 15 minutes prior to the pick-up time at your booked pick up location. There might be 5-10 minutes delay depends on the traffic on the day. If you think the pick is late or you are not being picked up, please call The Service Provider and quote your confirmation number to double check.

What to bring/wear

- Appropriate clothing for all weather conditions, eg. jacket for cooler months.
- Comfortable enclosed walking shoes
- Protective clothing, hat, sunscreen lotion, and sunglasses
- Water bottle, Snacks
- Umbrella / raincoat if rains
- Insect repellent
- Camera
- Money / credit card for optional purchases

Other info

- Tour
 - 11:30 photo available in the wildlife studio (also available at 12:30, 13:00, and 14:00).
 - Low level of fitness needed, some walking is involved at Australia Zoo, walking aids are available for hire at Australia Zoo

- Australia Zoo is an all- weather attraction with undercover seating

- Child Policy

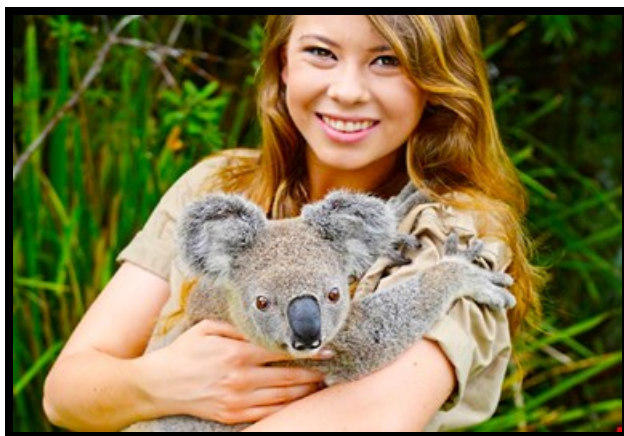
- Infants travelling on a Public Day Tour aged between 0-3 will be given an allocated seat and be seated in a Child Restraint Seat subject to availability. Child Restraint Seats will be available for hire or the customer may supply their own.
- Children aged 4-7 travelling on a Public Day Tour must be seated in an allocated seat and wear a seat belt. Booster Seats are available as an option for hire or the customer may supply their own. Children aged 4-7 must not travel in the first two rows of the coach on a Public Day Tour

- General

- Itineraries, prices and days of operation are subject to change or withdrawal without notice. A fuel levy may apply when world oil prices exceed the allowance in the fare.
- State and territory laws require all passengers to wear seat belts in seat belt equipped vehicles. The Service Provider is not responsible for monitoring this requirement.
- Parents, guardians or the client are required to ensure all children wear seat belts in seat belt equipped vehicles.
- The Service Provider is not responsible for the provision, installation and securing of children and child booster seats, capsules and child restraints. Parents, guardians or the client are responsible to provide, install and secure all child restraint and booster seats.
- The Service Provider is not responsible for the behaviour and safety of children when not accompanied by a parent or guardian.
- Customers are responsible for their own physical safety at all venues and locations.
- Parents or Guardians are responsible for the safety of children at all venues and locations. The Service Provider reserves the right to deny travel where a risk to customers, public or staff is perceived.
- Passengers must be able to ensure their own safety and enjoyment on the tour (including any stops and venues visited) and passengers with special needs must be accompanied by a carer or assistant where necessary.
- Passengers travelling in a wheel chair must travel in the wheel chair unless a spare coach seat is available.
- Wheel chairs will only be unloaded at stops which are longer than 15 minutes.
- The Service Provider is not responsible for the anchoring of the wheel chair.
- No illicit drugs or alcohol are to be consumed on any Service Provider's vehicle.
- Smoking is not permitted on any Service Provider's vehicle.
- The Service Provider reserves the right to eject any passengers behaving in an inappropriate, offensive, intoxicated or destructive manner from the vehicle or to stop the vehicle until the relevant behaviour ceases or the situation is otherwise resolved. This may include requesting that police or other relevant authorities attend.
- Passengers and the person booking are responsible for any damage they directly or indirectly cause to the vehicle. Examples of damage include vandalism, food or beverage spillage and breakage of interior or exterior fittings.
- To the extent permitted by law, Service Provider reserves is not responsible for any damage or soiling of luggage.
- The Service Provider is not a bailee in respect of any lost property left on Service Provider's vehicle and does not guarantee the security of any lost property.
- The Service Provider recommends that all customers obtain an appropriate Travel Insurance policy.
- Pending tide conditions on the river, the cruise may need to go in the opposite direction.
- The Service Provider reserves the right to modify or cancel tours and bookings leading up to and on the day of travel due to road, weather or other operational needs warranted at the time and will always be in the best interest and safety of all clients.

Croc Express to Australia Zoo Full Day Tour with Koala Pack Departs from Brisbane

Take a scenic trip to the Sunshine Coast and visit world-famous Australia Zoo, home of the Crocodile Hunter Steve Irwin. Australia Zoo is a must-see holiday highlight for Australians and international visitors with more than 1200 animals from around the globe, daily wildlife shows and the busiest wildlife hospital in the world where you can see vets saving native Australian animals.



Croc Express to Australia Zoo Full Day Tour with Koala Pack Departs from Brisbane

Australia Zoo

This is a zoo unlike any other! Just an hour north of Brisbane on the Sunshine Coast is where you'll find Australia Zoo. With its prime focus of wildlife conservation, the zoo have a team of extremely dedicated and passionate staff keen to have you fall in love with the animals as well as educate you on their amazing work.

Your Day

Travel an hour north from Brisbane to Australia Zoo enjoying views of the majestic Glasshouse Mountains bordered by pineapple farms and pine forests as you travel along Steve Irwin Way scenic route. There is plenty of time (approximately 6 hours) to experience this wildlife "Theme Park". Witness many shows including crocodile feeding and snake handling. The handlers even walk some animals through the park so you can get "up close and personal." Australia Zoo believes in "conservation through exciting education" and will ensure you have a wildlife experience you'll never forget.

Highlights

- Enjoy a city tour of Brisbane as you stop for those joining from Brisbane
- Travel an hour north to the Sunshine Coast catching glimpses of the magnificent Glasshouse Mountains
- Australia Zoo - made famous by Steve and Terri Irwin with their wildlife documentaries
- Your Koala Pack includes Koala Cuddle, souvenir photo and Wildlife Hospital sneak peek
- Watch the Wildlife Warriors show where all the crocodile action happens!
- Jump on an orientation tour aboard the Safari Shuttle
- Birds of prey Live show, Tiger show
- Opportunity to purchase lunch at Crikey Cafe or Dingo Diner (own expense)
- Animal encounters - Koalas, kangaroos, snakes, birds, alligators, possums and much more!
- Visit Tiger Temple - home to the critically endangered Sumatran and Bengal Tigers
- See the amazing multi species African Safari Park exhibit

The above itineraries may operate in reverse order, in a different sequence, be swapped around, or in rare circumstances be replaced by other best suited items to suit times & conditions.

Cancellation Policy

- If you cancel at least 7 day(s) in advance of the scheduled departure, there is no cancellation fee.
- If you cancel between 0 and 6 day(s) in advance of the scheduled departure, there is a 100 percent cancellation fee.
- If no show, no refund.



Australia +61(0)2 9660 8881

Enjoyaus

 enjoyauscn  Enjoyaus 享樂澳洲遊

E web@enjoyaus.com